

SASHLITE GLAZING METHOD

DESCRIPTION

These Glazing Guidelines are recommended for use when it is required to perimeter fill and putty front or for the bead glazing of Sashlite Ultra Thin Double glazed units. These Glazing Systems are suitable for the restoration of period properties, listed buildings and glazing in conservation areas in all frame types where a painted or uncoated finish is required. Hodgson Heritage Putty is elastic when cured giving a higher movement accommodation than traditional putties, this is beneficial when used in applications with a reduced sightline and / or narrow rebates in order to accommodate movement. Heritage Putty can also be painted within a short time frame relative to traditional putty types.

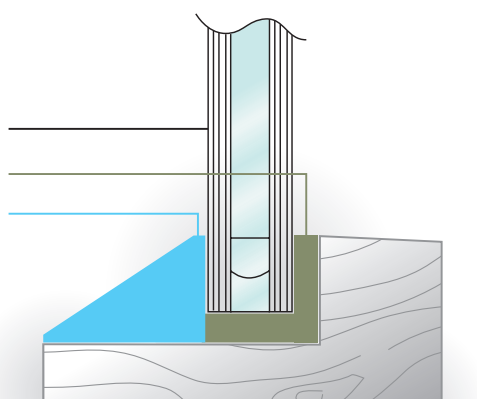
ILLUSTRATED DIAGRAM OF THE PUTTY GLAZING METHOD

This diagram illustrates external fronting only

Reduced Sightline Insulating Glass Unit

Heritage Putty

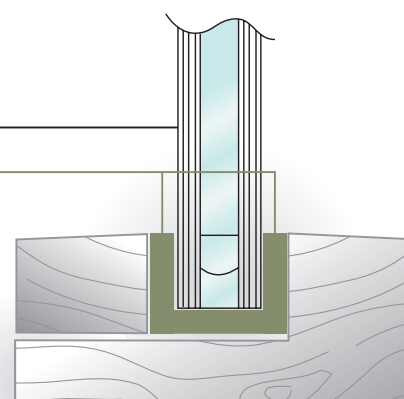
Hodgson Heritage or Colourglaze Putty



ILLUSTRATED DIAGRAM OF THE BEADED GLAZING METHOD

This diagram illustrates external beads only

Double Glazed Unit
Hodgson Heritage Putty



Note: Heritage Putty may also be required to comply with BS8000: Part 7 Clause 2.2.1(e) sealing of frame section junctions and fabrication holes, prior to glazing.

EXPOSURE/WEATHERTIGHTNESS RATING

- Suitable for a 2300 Pa 'High' Exposure Rating

INDUSTRY STANDARDS COMPLIANCE

- BS 8000 Reference 3.4.1.4
- GGF Manual Section 4.2
- BS6262 – Glazing for Buildings (H1 Only)

COATING SYSTEM SUITABILITY

Hodgson Heritage Putty is paintable with water and solvent based products. It is recommended that due to the availability of many different paint types that compatibility tests are conducted prior to painting. Heritage putty can extend the drying time of solvent based paints therefore the use of a water based undercoat can be considered in order to avoid this. Skin formation and curing times of Heritage Putty will vary depending upon temperature and humidity, lower temperatures and low humidity will extend rates of cure. Heritage Putty can be painted once a suitable skin has formed, however, for best results it is recommended that paint is applied a few days after glazing.

Hodgson Colourglaze requires a period of 10 to 14 days in an external location in order to form a skin suitable for painting. The first coat should not be later than 21 days and the final coat should not be later than 28 days. Painting is essential in primed timber frames, however, not essential in primed steel frames. Hodgson Colourglaze is compatible with microporous coatings. See product data sheet for further information.

MAINTENANCE

Regular maintenance of the frame is essential to ensure maximum performance of the glazing system and IGU.

Full details of the Glazing methods can also be found in the Glazing Systems section on the following website; <https://hodgsonsealants.com/technical/glazing-systems/>

SASHLITE GLAZING METHOD STATEMENT

MATERIALS REQUIRED

- Hodgson Heritage Putty and / or Colourglaze Putty
- Glazing blocks – distance, location and setting blocks
- Sheradised pins / non-rusting metal sprigs

DISTANCE PIECES

Many instances of premature unit failure can be traced directly back to incorrect size selection or absence of distance pieces. Ideally they must have a minimum thickness of 3mm*.

*This may be reduced to 1.5mm when glazing into frames with reduced rebate upstands / sightlines.

USEFUL TOOLS & ACCESSORIES

- Hand held moisture meter
- High powered skeleton gun
- Glazing shovel
- Tooling block
- Glass cleaner

MEASURING THE FRAME OPENING

In order to allow the unit to be fully bedded in glazing material, each frame opening must be measured, the unit size calculated and the minimum required edge clearance (3mm*) taken into account as described below. Ensure that protective edge tapes do not overlap by more than 1mm onto the face of the glass.

GLAZING AND CALCULATING THE SIZE OF REDUCED SIGHTLINE IG UNITS

At the time this document was written a Narrow Cavity Insulating Glass Unit or Reduced Sightline Unit as defined by the GGF is an IGU with cavity widths of 8mm or less and with reduced spacer-bar sightlines. Typically these reduced sightline IGUs are required to have spacer-bar sightlines that are less than the usual minimum sightline depth, determined by the depth of the spacer-bar and the minimum sealant depth stated by the sealant manufacturer.

Due to dimensional constraints, especially when re-glazing existing frames previously designed to receive single glass; it should be noted that when glazing narrow cavity or reduced sightline IGUs, it may not be possible to meet all of the requirements of BS6262, BS8000 or GGF data sheet 4.2. In all instances it is recommended that the glazing method

employed should be based on the IGU manufacturer's own recommendations. Consideration will also need to be made when calculating the required size of the reduced sightline IGU.

PREPARATION

1. Check that the moisture content of the window does not exceed 17% as per NHBC Chapter 6.7.
2. Remove all beads from the window.
3. Remove all dust, grease and loose material from the rebate. Any moisture on the timber should be wiped off using a clean paper towel or other absorbent material to give a dry surface.
4. Check the condition of any primer or stain on the frame, especially the rebate.

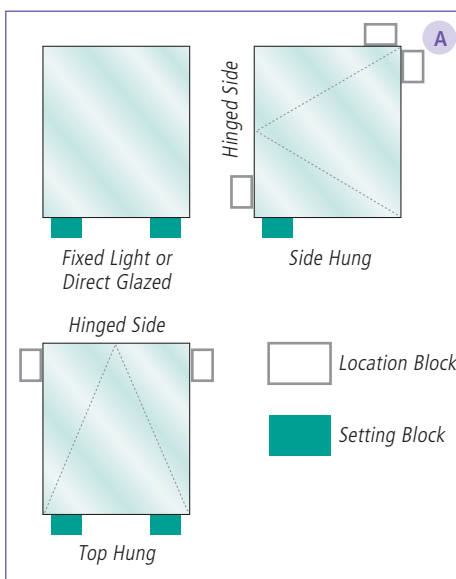
Any section which has been partially missed or is considerably weathered should be reprimed or stained before glazing.

5. Check that the unit fits into the frame and can be centralised when standing the unit on the setting blocks. The spacer bar should ideally be level with the sightline or slightly below it.

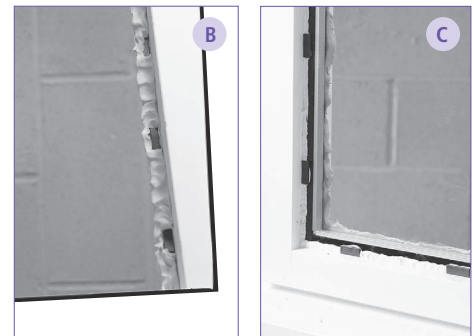
PREPARATION OF THE IG UNIT

Inspect the double glazed unit for obvious defects and wipe any dust or loose material off the unit. Edge tapes should be removed to allow inspection unless otherwise recommended by the IG Unit manufacturer. Cut away excess edge sealant from the face of the glass. If glazing laminated glass, ensure that protective foil is applied around the edges of the glass to protect the laminate.

PUNITY GLAZING APPROACH



4. Position the bottom of the unit on the setting block(s). Using a glazing shovel inserted at the side of the unit to control and guide the unit, ease it back a little so that the unit can be centralised in the frame.
5. Press firmly all the way round the edge of the unit to engage the distance pieces so as to give a minimum 3mm thickness of compound. This may be reduced to 1.5mm when glazing into frames with reduced rebate upstand / sightline.
6. If you are glazing an opening sash, insert location blocks around the sides and top of the units as shown in picture A.
7. Apply further Hodgson Heritage Putty around the edge of the unit to completely fill the perimeter void.
8. Secure the IG Unit using non-rusting metal sprigs.
9. Apply Heritage Putty or Colougraze Putty to fill up the front bedding to the sightline. Knife / tool off the Hodgson Heritage Putty to form a fillet that finishes level or fractionally above the sightline depending upon painting requirements.
10. Tool off the back bedding of Hodgson Heritage Putty before it forms a skin (< 20 minutes), finishing with a slope away from the glass.



BEADED GLAZING APPROACH

Follow Putty Glazing Approach up to point 6.

7. Apply further Hodgson Heritage Putty around the edge of the unit to completely fill the perimeter void, finishing with a fillet to bed the bead to the unit and the platform.
8. Position the distance pieces opposite those in the back bedding. Bed the bead onto the fillet of Hodgson Heritage Putty and push to engage the distance pieces.
9. It is advisable to use shorter pins when pinning beads to the midrails found on some horizontal and all bar windows styles. Position the pins at right angles to the surface of the bead. They should be no more than 50mm from either end and not more than 150mm apart. There should always be at least two pins for every bead. Position and pin the two side beads and top bead.
10. Apply Hodgson Heritage Putty to fill up the front bedding to the sightline, finishing with a slope away from the glass.
11. Tool the internal and external bedding to a Chamfer to assist in the shedding of water.

GLAZING OF FRAMES

1. All IG units must be positioned on setting blocks. If the window has an opening sash, each unit will need to have its weight supported by location blocks in addition to the setting blocks. The position of setting and location blocks depends on the way the sash is hung. Check with the diagram above to select the correct position of location and setting blocks appropriate to the window to be glazed (see picture A).
2. Apply sufficient Hodgson Heritage Putty to the rebate and insert distance pieces (see picture B).
3. Position the setting blocks on the bottom rebate as near quarter points as possible as shown on picture C. Where more than one unit per window is to be glazed, start by glazing the bottom unit(s).

FRAME DECORATION AND MAINTENANCE

When painting Hodgson Heritage Putty, information contained within COATING SYSTEM SUITABILITY on page 1 of this document should be observed.

Regular maintenance of the frame is essential to ensure maximum performance of the glazing system and IG unit.

HODGSON HERITAGE PUTTY USAGE CALCULATOR

Linear metres of glazing per 290ml cartridge for putty fronting in accordance with Sashlite Glazing System

| | | Putty Front | Timber Beads |
|----------------|------|-------------|--------------|
| PLATFORM WIDTH | 20mm | 3.8m | 4.9m |

For a typical sash containing 9 off 300 x 200mm units approximately 2 cartridges would be required.

This calculation does not allow for any wastage in the process.

BASED ON

- 1.5mm thick back bedding
- 1.5mm edge clearance
- 10mm rebate upstand
- 10mm thick slim style IG units